



THIS I DIG OF YOU (CONT.)



Musical staff 1, measures 43-47. The staff begins with a treble clef and a key signature of one flat (B-flat). It contains a sequence of eighth and quarter notes with various accidentals.

48



Musical staff 2, measures 48-52. Continuation of the melodic line with eighth and quarter notes.

53



Musical staff 3, measures 53-57. Includes a triplet of eighth notes in measure 56.

58



Musical staff 4, measures 58-62. Continuation of the melodic line with eighth and quarter notes.

62



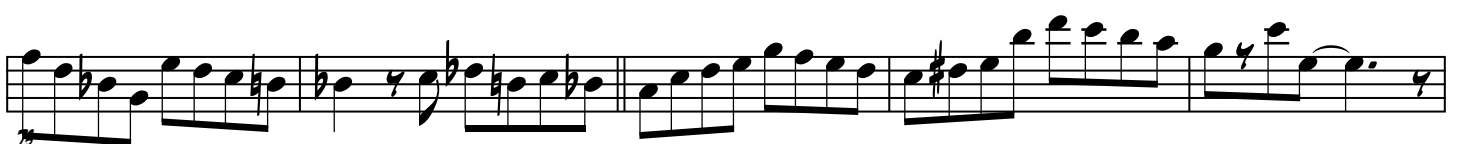
Musical staff 5, measures 62-66. Continuation of the melodic line with eighth and quarter notes.

67



Musical staff 6, measures 67-71. Continuation of the melodic line with eighth and quarter notes.

72



Musical staff 7, measures 72-76. Continuation of the melodic line with eighth and quarter notes.

78



Musical staff 8, measures 78-82. Continuation of the melodic line with eighth and quarter notes.



4

THIS I DIG OF YOU (CONT.)

F

F# $\emptyset$

B7+9

E MIN

A7

D MIN

G7

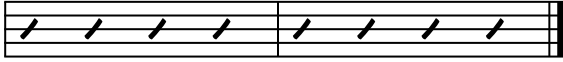


124

C

D MIN

G7



130