

TENOR SAX

IN A PINCH

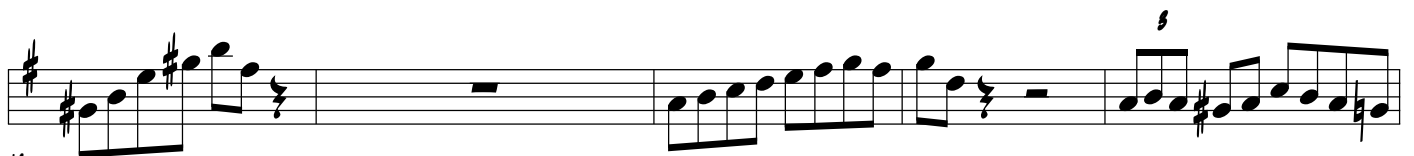
WARDELL GRAY'S SOLO FROM THE BOX SET
"THE WARDELL GRAY STORY"

TRANSCRIBED BY
CHARLES MCNEAL

275 BPM



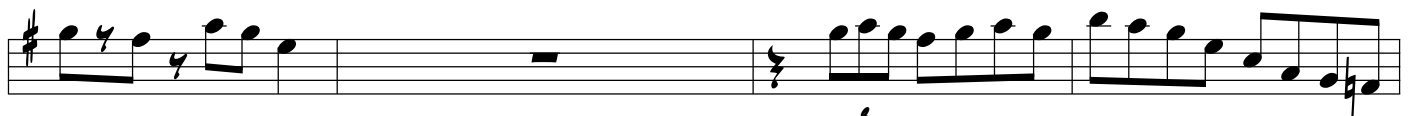
5



10



15



20



24



28

34

Musical staff 34, starting with a treble clef and a key signature of one sharp (F#). It features a melodic line with eighth and sixteenth notes, including various accidentals such as naturals, sharps, and flats.

39

Musical staff 39, continuing the melodic line from staff 34. It includes a double bar line in the middle of the staff.

44

Musical staff 44, continuing the melodic line with some rests and a final double bar line.

50

Musical staff 50, continuing the melodic line with a variety of note values and rests.

55

55

Musical staff 55, continuing the melodic line. A fermata is placed over a note in the fifth measure.

59

59

Musical staff 59, continuing the melodic line. A fermata is placed over a note in the second measure.

64

Musical staff 64, concluding the melodic line with a double bar line.

G EM AM D7 B \emptyset E7 AM D7 G

66

Musical staff 66, showing a sequence of six measures with slash notation indicating a guitar chord progression. The key signature remains one sharp.

72

DM G7 C#M F#7 Bm E7 Am D7 G

78

A7 D7 G Em Am D7

84

Bø E7 Am D7 G Dm G7

90

C#M F#7 Bm E7 Am D7 G Am D7

96

G