

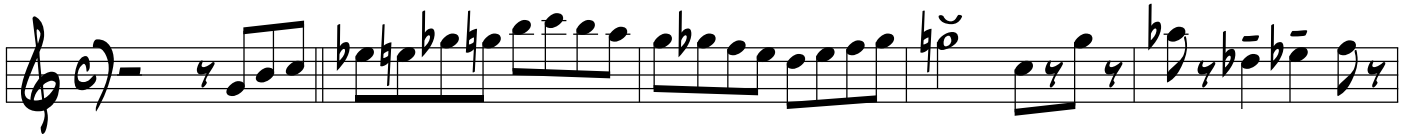
TENOR SAX

# COOL EYES

HANK MOBLEY'S SOLO FROM THE HORACE SILVER CD  
"SIX PIECES OF SILVER"

TRANSCRIBED BY  
CHARLES MCNEAL

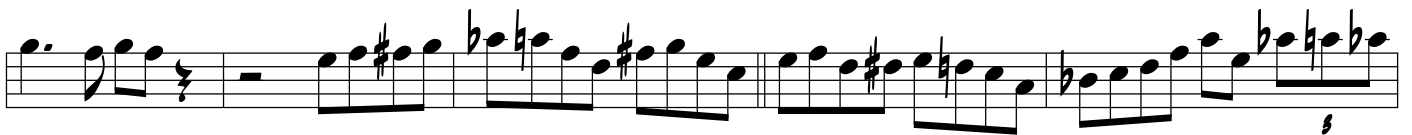
230 BPM



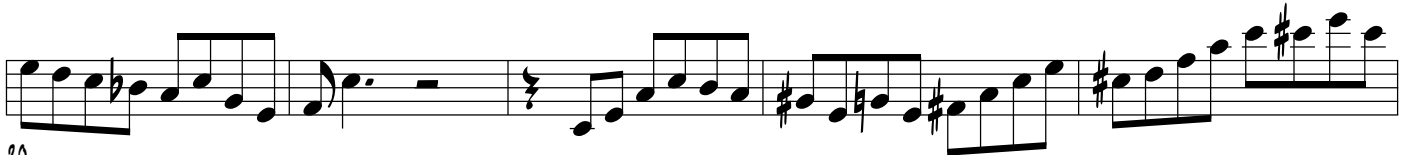
6



11



15



20



25



30

34

35 *s* *s*

40

45

49

54 *s*

59

63 *s*

CHORD CHANGES  
 C DM G7 C AbM Db7 C F Bb7

66

C            Dm G7    C            Dm G7    C            Abm Db7

A musical staff with a treble clef and six measures. Each measure contains a series of diagonal slashes representing a rhythmic pattern. A double bar line is present after the second measure.

72

C            F Bb7    C                            Gm            C7

A musical staff with six measures of rhythmic notation, each containing diagonal slashes. A double bar line is present after the fourth measure.

78

F                            Am            D7            Dm            G7

A musical staff with six measures of rhythmic notation, each containing diagonal slashes. A double bar line is present at the end of the sixth measure.

84

C            Dm G7    C            Abm Db7    C            F Bb7

A musical staff with six measures of rhythmic notation, each containing diagonal slashes. A double bar line is present at the end of the sixth measure.

90

C

A musical staff with two measures of rhythmic notation, each containing diagonal slashes. A double bar line is present at the end of the second measure.

96