

TENOR SAX

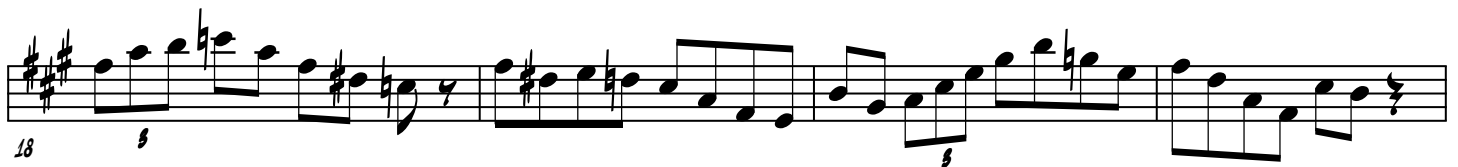
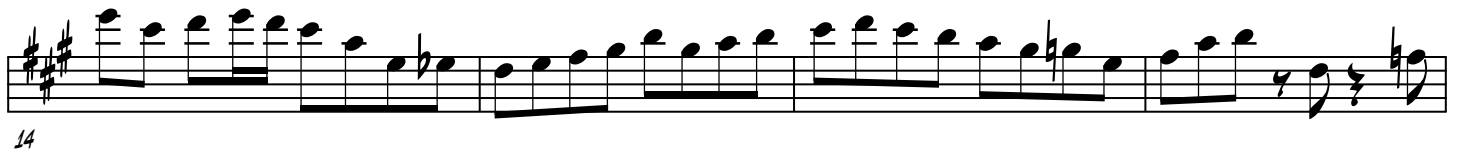
BLUES IN THE CLOSET

WARDELL GRAY'S SOLO FROM HIS RELEASE "EASY SWING"

200 BPM

TRANSCRIBED BY
CHARLES McNEAL

BLUES



2

BLUES IN THE CLOSET (CONT.)

Musical notation for the second system of 'Blues in the Closet (Cont.)'. The notation is written on a single staff in treble clef with a key signature of two sharps (F# and C#). The piece is in 4/4 time. The first measure starts with a treble clef and a key signature of two sharps, with the number '34' written below it. The melody consists of eighth and quarter notes, with some notes beamed together. A fermata is placed over the first two notes of the first measure. A '3' is written below the staff at the beginning of the second measure, indicating a triplet. The piece concludes with a double bar line.